



UNIFORM GUIDE

What to wear at work during the summer



WHAT'S IN THIS GUIDE?

Information about what uniform we provide and what you will need to bring with you.

We also cover the standards and expectations of wearing the Neilson uniform.

CONTENTS

03

UNIFORM STANDARDS

04

UNIFORM ALLOCATION

04

KEEPING IT CLEAN

05

ACTIVE TEAM - BEACH/CLIMBING/KIDS
CLUB/WATERSKI

06

BIKE TEAM

07

TENNIS TEAM

08

FITNESS TEAM

09

YACHT TEAM

10

SPA TEAM

11

HOSPITALITY TEAM - BAR/RESTAURANT/RESORT
HOST/GSM/RECEPTION

12

PROVIDING YOUR OWN - SHORTS

13

PROVIDING YOUR OWN - HATS

14

PROVIDING YOUR OWN - TRAINERS



UNIFORM STANDARDS

As a Neilson employee, you need to present yourself in a professional and smart manner when you are at work. Whilst we understand that there is a certain 'laid-back' look to life in our beach clubs, and we're certainly not asking you to be suited and booted at work, we do still expect you to be presentable and take pride in your appearance when wearing the Neilson uniform.

When it comes to your uniform, you are expected to:

- Wear your full uniform when you are at work
- Keep your uniform clean and smart throughout the season
- Return all uniform at the end of your contract
- Not mix personal items of clothing, such as non-uniform hats or hoodies with your uniform.

In addition to the uniform you wear, you also need to adhere to the following health & safety guidelines:

- Remove all jewellery that poses a risk of getting caught (i.e rings, necklaces, bracelets, anklets etc.)
- Facial hair must be neatly groomed, or clean-shaven
- Tie back long hair
- Keep nails short and clean



UNIFORM ALLOCATION



Once you arrive, your manager will issue you with the parts of the uniform that Neilson provide.

You will be asked to sign a form as a record of what uniform you have been given. It is your responsibility to look after your uniform and keep it smart.

If you loose something, or an item is damaged through misuse, then you will be charged for it according to the amount on the uniform form you signed. Let your manager know as soon as possible if something is lost, stolen or damaged.

KEEPING IT CLEAN

Parts of your uniform will be laundered on site by the housekeeping team. These items need to be handed in at the end of your shift so that the housekeeping team can always makes sure there is clean uniform available.

Other items will need to be kept fresh and clean by yourself. Your staff accommodation will have washing facilities for you to use.

Your manager will advise you which items are washed by housekeeping once you arrive.

ACTIVE TEAMS

Beach | Climbing | Lifeguard/Swim | Kids' Club |

Waterski/Wakeboard

Neilson will provide:

- Active t-shirt (to be worn during the day)
- White Polo t-shirt (to be worn during the evening and if on transfer)
- Fleece
- Pullover water/windproof jacket
- Hat
- Name Badge

You will need to bring with you:

- Black boardshorts/swim shorts
- Flip Flops
- Plain, black trainers



BIKE TEAM

Neilson will provide:

- Neilson MTB jersey
- Neilson road cycling jersey
- Helmet
- Gloves
- White Polo t-shirt (to be worn during the evening and if on transfer)
- Fleece
- Pullover water/windproof jacket
- Hat
- Name Badge

You will need to bring with you:

- Black cycling shorts (both road and MTB)
- Cycling shoes - with cleats & peddles (if preferred)
- Helmet (if you wish to use your own)
- Gloves (if you wish to use your own)
- Black boardshorts/swim shorts
- Plain, black trainers



TENNIS TEAM

Neilson will provide:

- Tennis shirt (to be worn during the day)
- Tennis short
- Tennis Racket
- White Polo t-shirt (to be worn during the evening and if on transfer)
- Fleece
- Pullover water/windproof jacket
- Hat
- Name Badge

You will need to bring with you:

- Tennis Trainers
- Black boardshorts/swim shorts
- Plain, black trainers



FITNESS TEAM

Neilson will provide:

- Fitness tops
- Fitness shorts & leggings
- White Polo t-shirt (to be worn during the evening and if on transfer)
- Fleece
- Pullover water/windproof jacket
- Hat
- Name Badge

You will need to bring with you:

- Fitness trainers
- Sports bra (if needed)
- Black boardshorts/swim shorts
- Plain, black trainers



YACHT TEAM

Flotilla Crew | Shore-based Crew | Trainers

Neilson will provide:

- Active t-shirt (to be worn during the day)
- White Polo t-shirt (to be worn during the evening and if on transfer)
- Fleece
- Pullover water/windproof jacket
- Yacht Waterproof Jacket
- Hat
- Name Badge

You will need to bring with you:

- Black boardshorts/swim shorts
- Deck Shoes (If preferred)
- Flip Flops
- Plain, black trainers



SPA TEAM

Spa Therapist | Massage Therapist

Neilson will provide:

- Tunic
- Trousers
- Name Badge

You will need to bring with you:

- Plain, black sandals
- Light, black cardigan
- Silver or black fob watch



HOSPITALITY TEAM

Restaurant | Bar | Resort Host | GSM | Reception

Neilson will provide:

- White Polo t-shirt
- Neilson Apron (restaurant & bar)
- Fleece
- Hat
- Name Badge

You will need to bring with you:

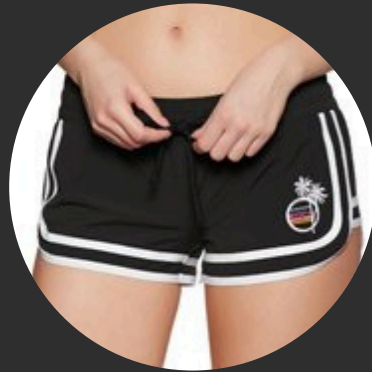
- Navy Chinos
- Navy Chino Shorts (bar only)
- Plain, black trainers



PROVIDING YOUR OWN

Shorts

Shorts must be 80% black in colour. Logos are permitted, so long as the majority of the garment is black. Here are some examples...



PROVIDING YOUR OWN

Hats

Hats can be any style, so long as they are black in colour. A small logo is permitted, so long as it's small and not the main feature on the hat. See the examples below..



PROVIDING YOUR OWN

Trainers

Trainers can be of any style, so long as they are 80% black. See the examples below...

